

SUE

SCAI

STATE OF CALIFORNIA
COUNTY OF BERKELEY

KNOW ALL MEN BY THESE PRESENTS, THAT THE STATE OF CALIFORNIA, COUNTY OF BERKELEY, DOES HEREBY CERTIFY AND CONFIRM THE FOLLOWING:

T.G.S. R. 34.1

BEGINNING AT THE LATITUDE OF THE PARK HIGHWAY 823 CENTER LINE 100.3 FEET TO THE MEASUREMENT CENTER LINE

AND THE SAME BEING NE 1/4 SECTION 4 OF THE FILING ACCEPTANCE BY HEREBY GIVE AND PLATTED THAT A FOREVER, BUT OF CONSTRUCTION

ANY CON PLACED THEREON OF THIS PLAT THE HEIRS, EXECUTORS, ADMINISTRATORS, DEMAND, THE EXECUTORS, AT ONCE TERMINATE REVERT TO FIRST

IN WITNESS

THAT THE TWO THOUSAND SHALL BE IN THE EVENT OF DEMAND, THE EXECUTORS, AT ONCE TERMINATE REVERT TO FIRST

IN WITNESS

TO FAIRVIEW

PINE

1314.0

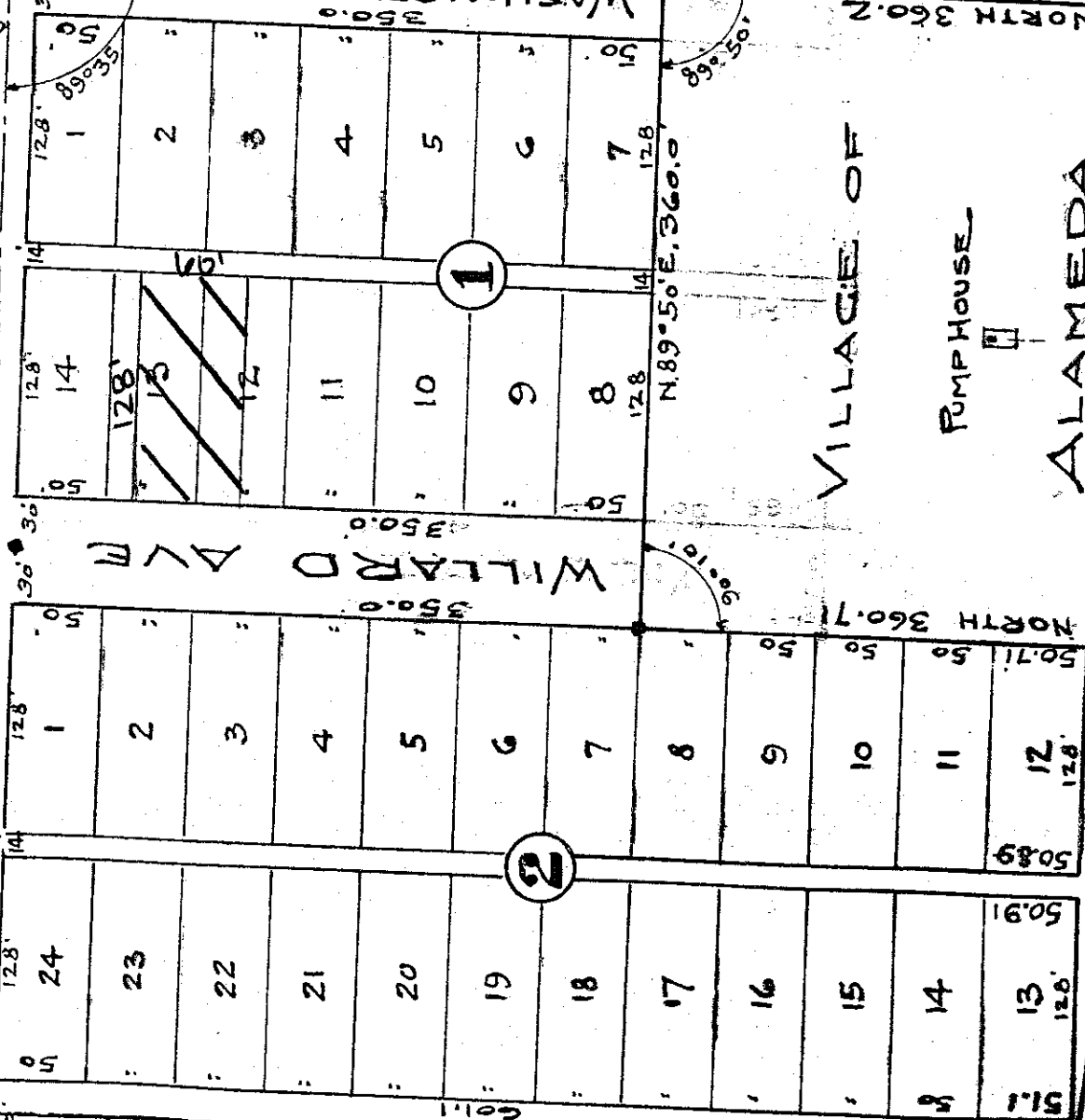
630.0

2641.8

ST

2634.74

To 1/4 COR



WALNUT ST.

GOVERNMENT ST.

GOVERNMENT ST.

